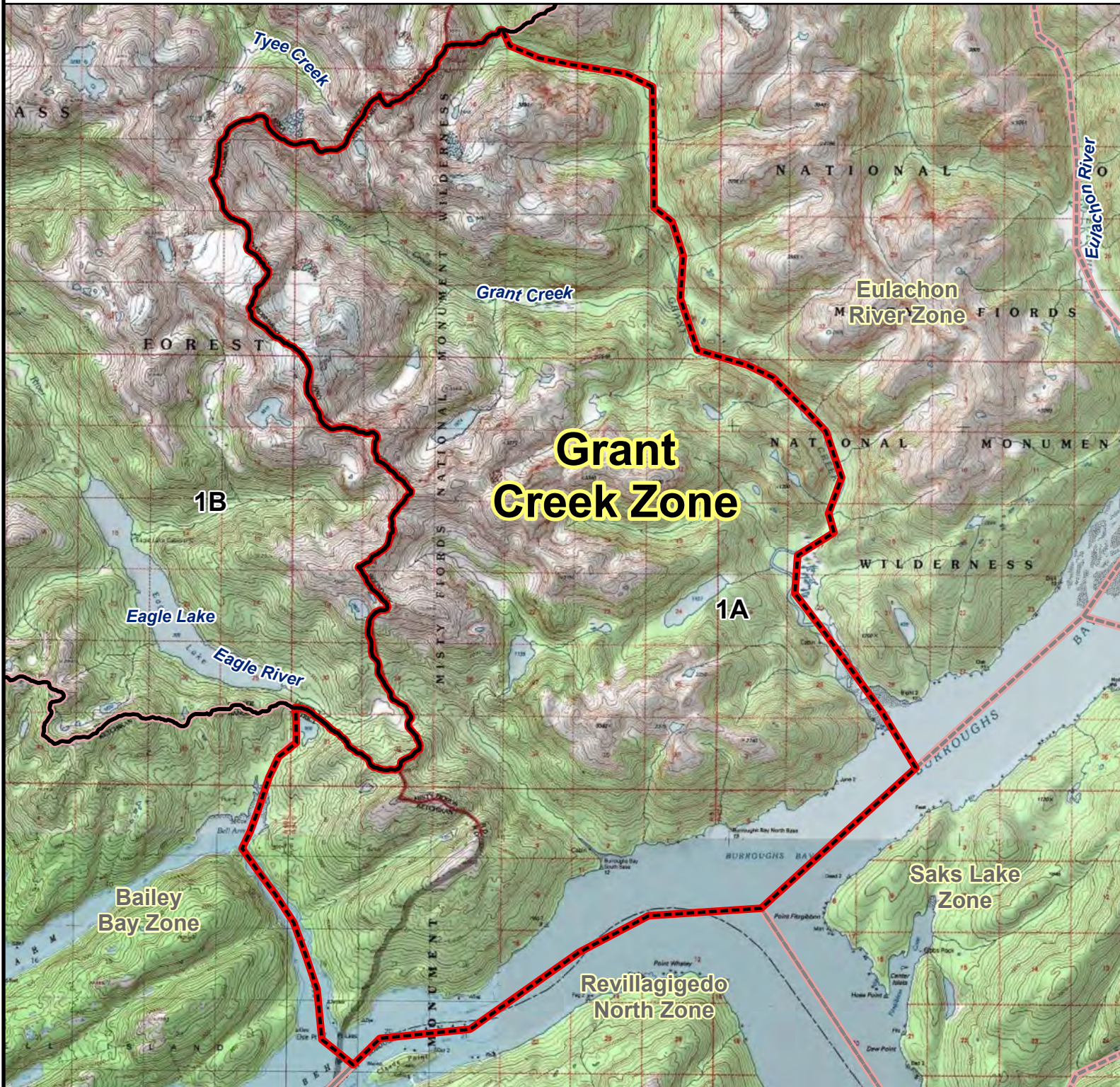


# RG002 MOUNTAIN GOAT HUNT

## Grant Creek Zone



**Grant Creek Zone:** Originating where Grant Creek meets Burroughs Bay, southwest to where Burroughs Bay meets Behm Canal, southwest through Behm Canal to the mouth of Anchor Pass, north through Anchor Pass to Bell Arm, then north to the head of Bell Arm and up the valley to the Eagle River, west to the inlet of the Eagle River, through Eagle Lake to the Eagle River which flows from the lake, northwest along the Eagle River to where it empties into Bradfield Canal, northeast through Bradfield Canal to the mouth of the Bradfield River, east along the East Fork of the Bradfield River to the valley that runs directly south between two peaks at GPS coordinates N 56.205630, W -131.391997, following the valley until it veers southeast to where it meets the drainage for Grant Creek, south along Grant Creek to where it empties into Burroughs Bay, to the point of origin.

